



---

---

**MEMORANDUM**

---

---

**TO:** PARKS AND RECREATION ADVISORY BOARD  
**FROM:** LAINE POTTER, PARKS DEVELOPMENT MANAGER  
**CC:** NICOLE OLIVER, PARKS AND RECREATION DIRECTOR  
**SUBJECT:** NORTHWEST NEIGHBORHOOD PARK NAME + PLAYGROUND OPTIONS  
**DATE:** DECEMBER 8, 2023

---

As part of a 6.6-acre Infill Toolkit development project, known as Aurora Court Phase 3, a new neighborhood park will be designed, constructed, and dedicated to the City. *Exhibit A* shows the location of the residential development project, located in the Cordata Neighborhood north of Mahogany Ave. The need for a neighborhood park in the northwest corridor was identified in the Recommended Facilities section of the 2020 Parks, Recreation, and Open Space Plan and building and dedicating a public neighborhood park is a condition of approval of the Aurora Court preliminary plat. *Exhibit B* shows the trails and parks required as part of the overall plat. Please note that Park A is being built with Aurora Court Phase 3 and Park B will be built with a future phase. The park was first introduced by PRAB members at the January 12, 2022 meeting and feedback on the preliminary design was subsequently shared with the developer.

Parks staff from the design and development and operations divisions have been meeting with the developer and engineer to discuss the site plan and provide review comments on park design, utilities, and playground options. The current park design is attached as *Exhibit C*. The project narrative describes the park as follows: "The preliminary park design is .8 acres and winds a path from Talus to Snowfield in a way that creates nodes of play areas. These nodes allow for hard scaped picnic areas, lawn space, natural play features and a play structure. The perimeter of the park will be landscaped with trees and the playful lines of the winding path will help define each area."

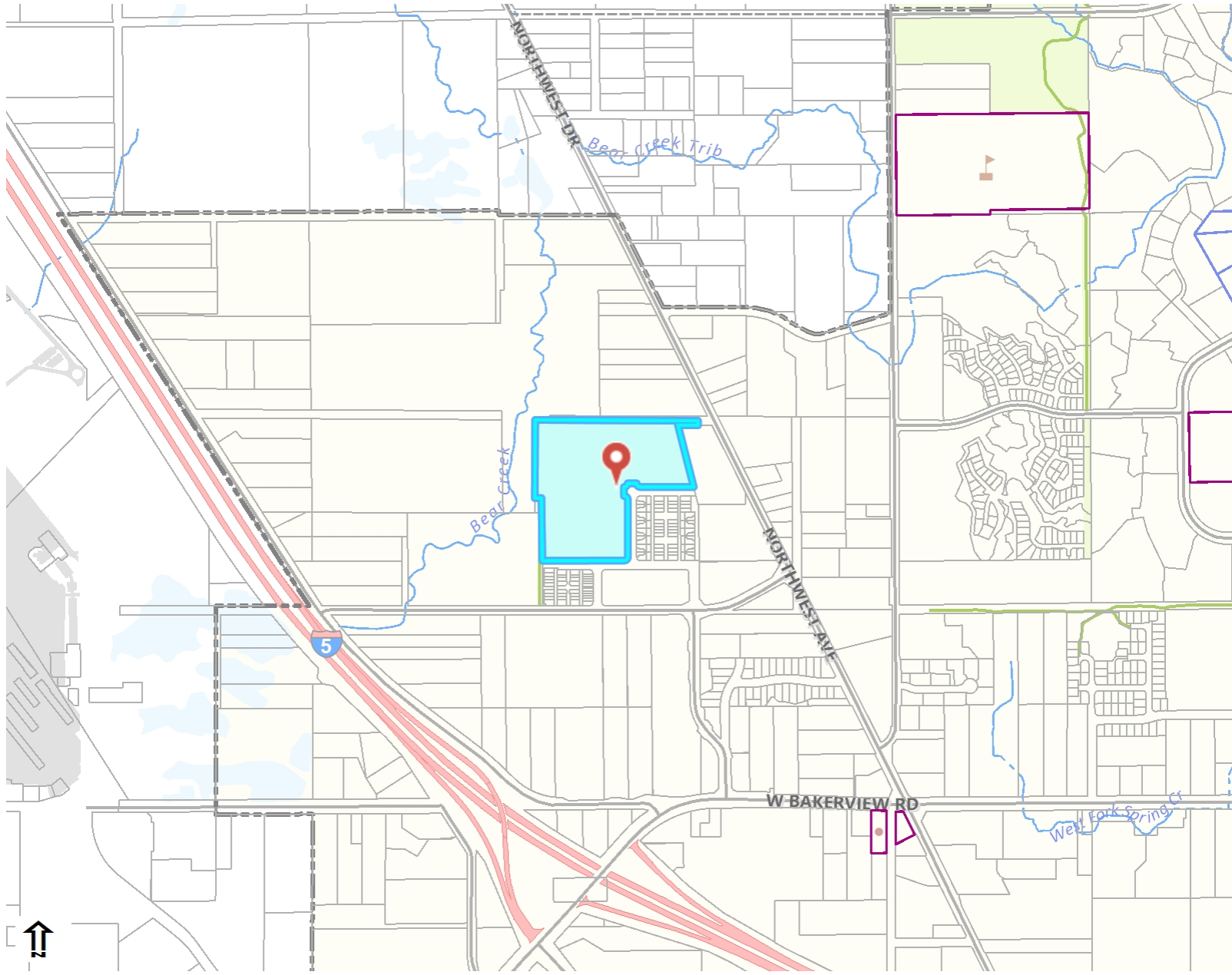
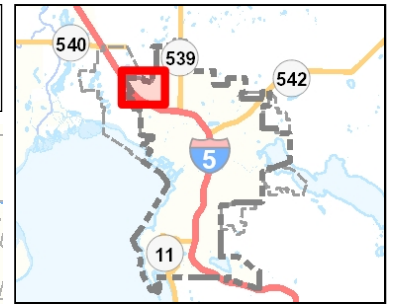
An [Engage Bellingham project page](#) was created to solicit name ideas and gather input on play equipment options for the two active play nodes. The surveys were shared by posting notices on site, sending mailers to the neighborhood, and sharing on Parks Dept. social media channels. As of the date of this memo, we've received 114 name ideas and had 43 responses to the playground options survey. The results of the name ideas and voting and the playground option survey will be shared with PRAB members ahead of the meeting. *\*Please note that swings are planned for Park B.*

In accordance with park policy [PAR 01.00.01](#), staff is requesting a name recommendation from PRAB to be presented to City Council.

# EXHIBIT A

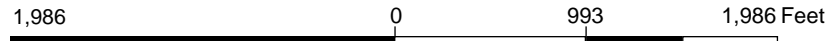


## Northwest Neighborhood Park



### Legend

- Tax Parcels
  - Care Facility
  - Hospital
  - Schools
  - <all other values>
- Schools
  - Colleges/Universities
  - Elementary, Middle, High Schools
  - Private School or Preschool
- Fire Stations
- City Boundary
- Urban Growth Area
- Trails
- Railroads
- Ferries
- Interstate Polygons
  - Street
  - Interstate
- Airport
- Open Channel Streams
- Parks



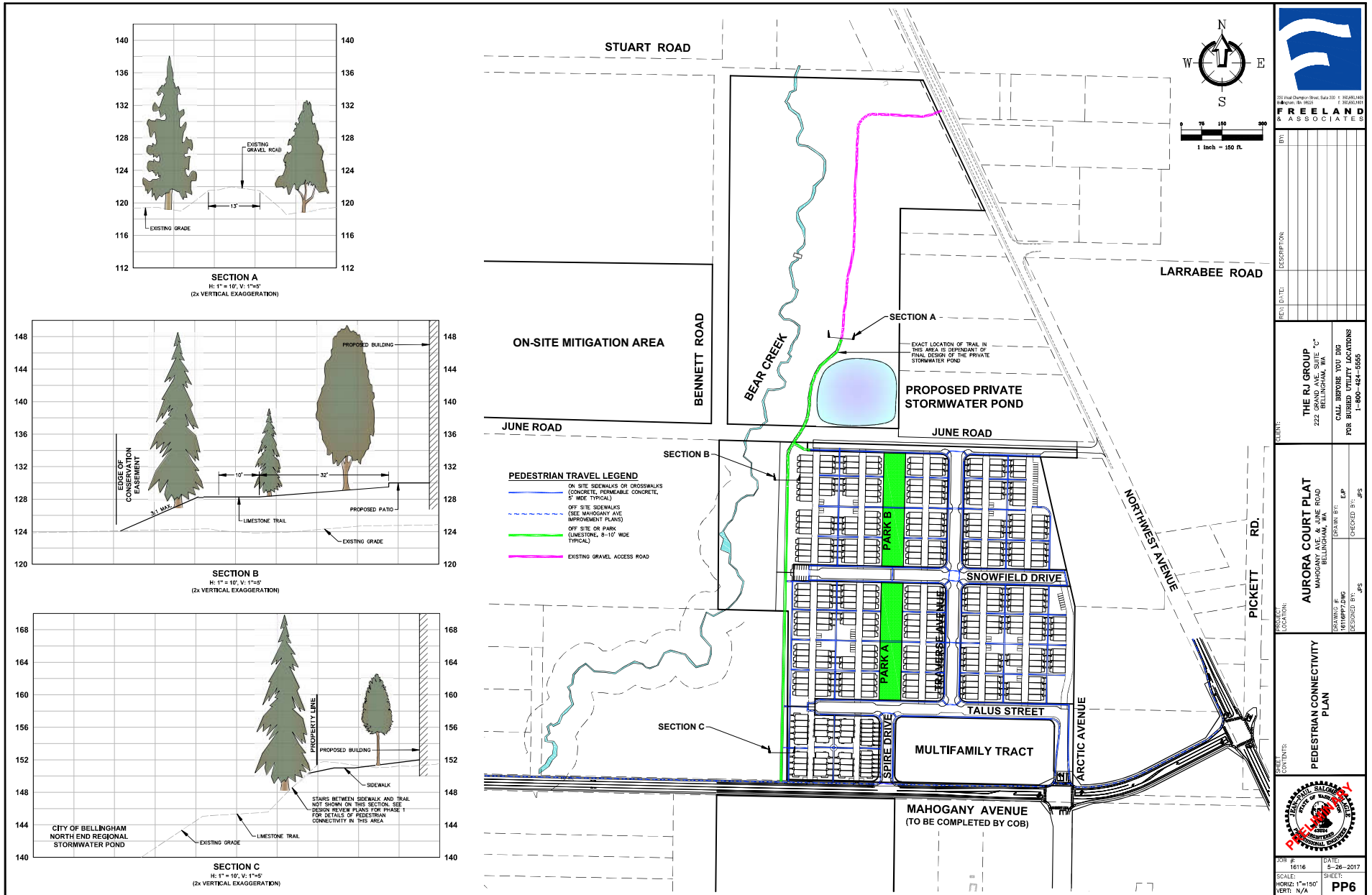
THIS MAP IS NOT TO BE USED FOR NAVIGATION

### Notes

Printed: 1/5/2022 11:48:17 AM

The City of Bellingham has compiled this information for its own use and is not responsible for any use of this information by others. The information found herein is provided simply as a courtesy to the public and is not intended for any third party use in any official, professional or other authoritative capacity. Persons using this information do so at their own risk and by such use agree to defend, indemnify and hold harmless the City of Bellingham as to any claims, damages, liability, losses or suits arising out of such use. Contact the Whatcom County Assessors office (360-778-5050) for the most up to date parcel information.

# EXHIBIT B





FREELAND  
& ASSOCIATES

# PEDESTRIAN ROUTE LEGEND

- CONCRETE SIDEWALK (5' WIDE TYPICAL)
- FUTURE CONC. SIDEWALK (5' WIDE TYPICAL)

- CITY OF BELLINGHAM TRAIL
- FUTURE CITY OF BELLINGHAM TRAIL

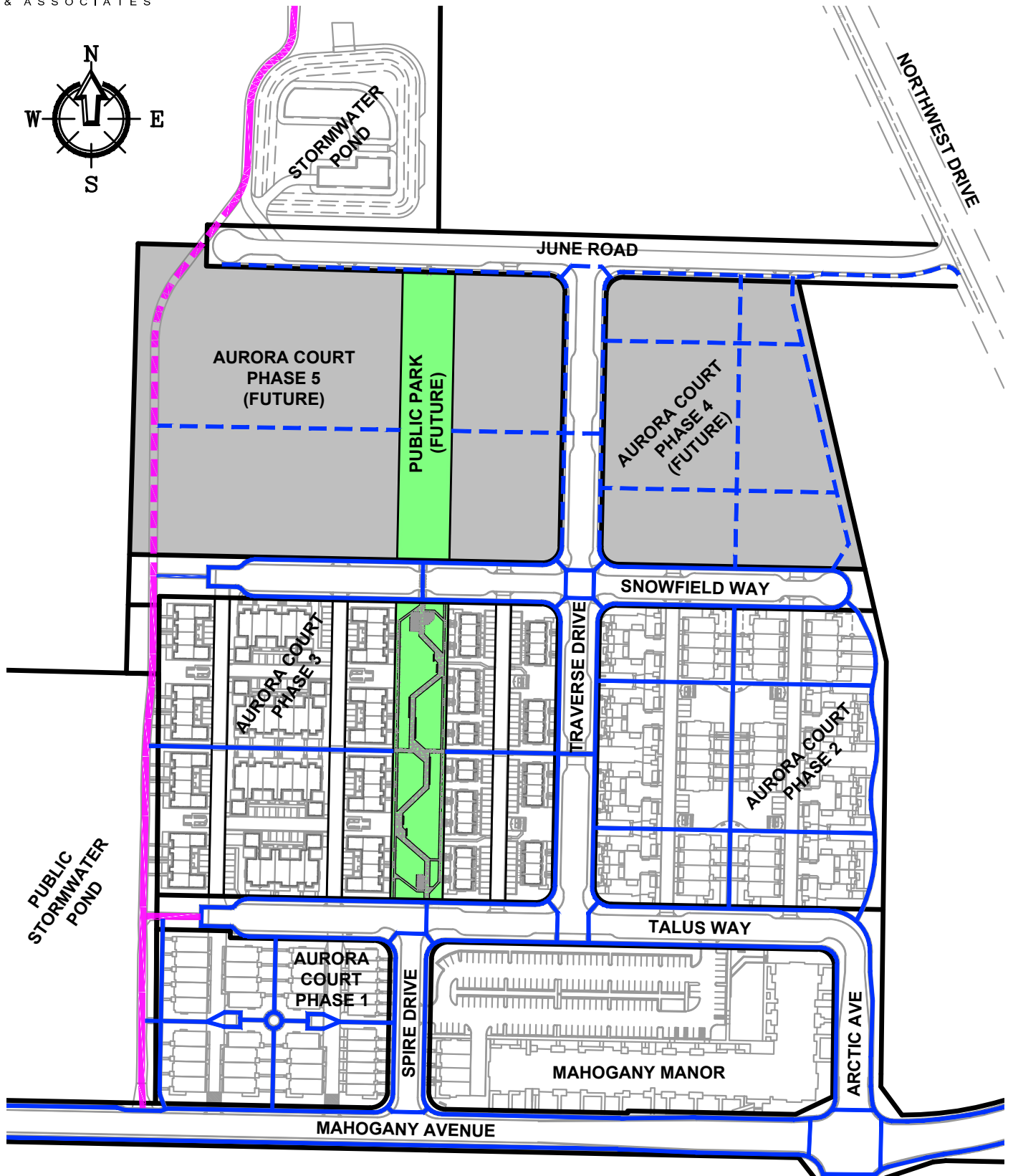
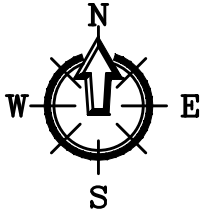
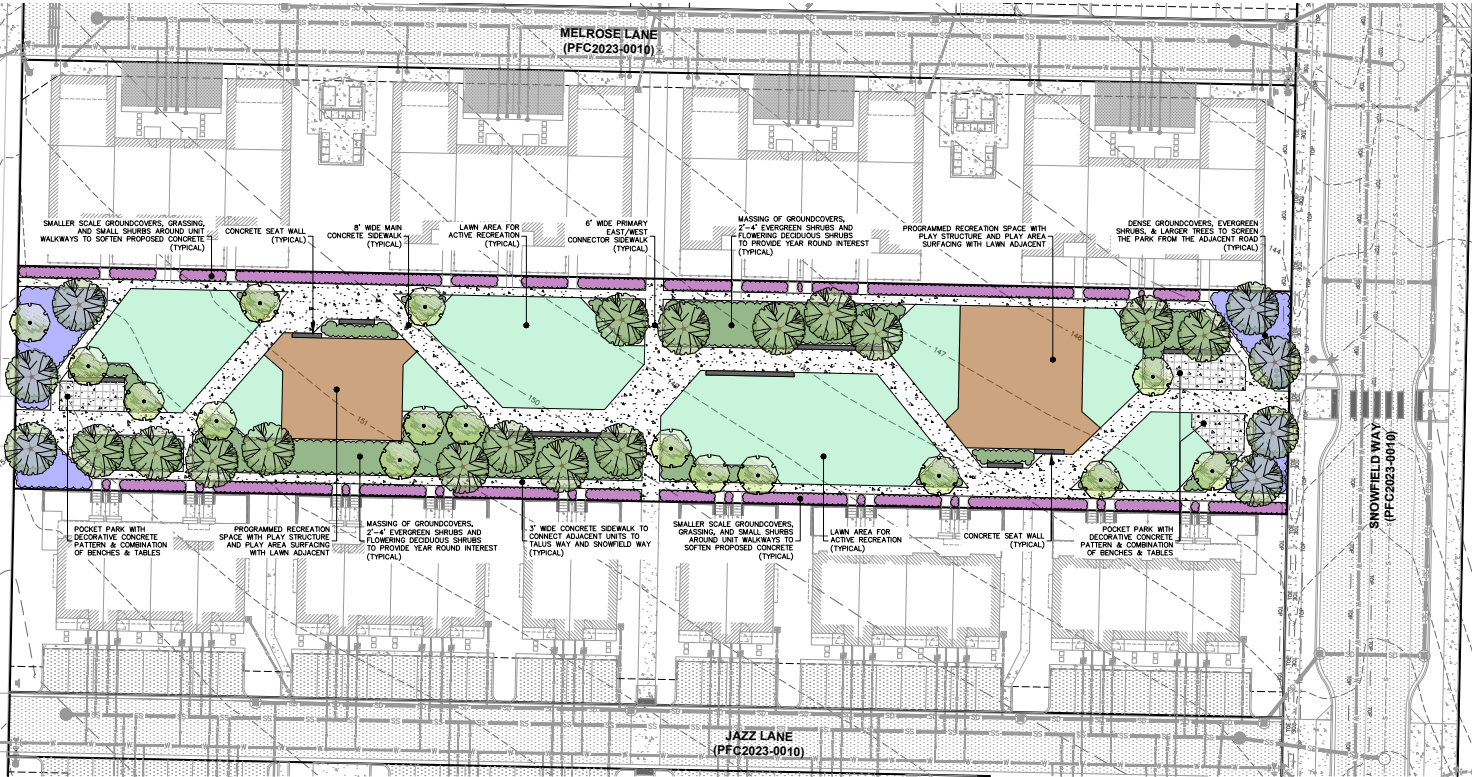
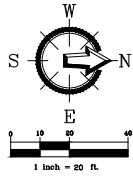




EXHIBIT C

# AURORA COURT PLAT PHASE 3.2 PARK PRELIMINARY DESIGN



- LEGEND:**
- = PROPOSED SMALL/MEDIUM TREE
  - = PROPOSED SMALL ORNAMENTAL TREES
  - = PROPOSED EVERGREEN SHRUBS
  - = PROPOSED SMALLER SCALE BORDER PLANTINGS
  - = PROPOSED USEABLE RECREATION LAWN AREA
  - = PROPOSED DENSE SCREENING PLANTINGS
  - = PROPOSED USEABLE PLAY AREA

**HORIZONTAL DATUM**

NAD 83/98

**PROJECT BENCHMARK**

NAVC88 (C08 88# 6305) EL. 199.65'



300 9th Street, Suite 1  
Bellevue, WA 98004  
P: 206.292.1400  
F: 206.292.4140  
**FREELAND & ASSOCIATES**

REV#	DATE	DESCRIPTION

**CLIENT:**  
**THE R GROUP**  
 222 GRAND AVE. SUITE "C"  
 BELLINGHAM, WA  
 CALL BEFORE YOU DIG  
 FOR BURIED UTILITY LOCATIONS  
 1-800-424-5555

**PROJECT:**  
**AURORA COURT PLAT**  
**PHASE 3.2**  
 MARGARET AVE. & WINE ROAD  
 BELLINGHAM, WA

**DRAWING #:** 2228PK32V.DWG  
**DESIGNED BY:** JPS  
**DRAWN BY:** EJP  
**CHECKED BY:** JPS

**SHEET CONTENTS:**  
 PRELIMINARY  
 PARK SITE PLAN

PRELIMINARY

**JOB #:** 22286  
**DATE:** 10-26-2023  
**SHEET:**

**DR1**